

South Tyneside COVID-19 update - Healthnet

Friday 9 April 2021

(Data correct as of Monday 5 April 2021)

Summary: Publicly reported cases and deaths

As of 5th April 2021 (difference from previous briefing on the 31st March)

Confirmed cases (pillar 1&2) – reported [here](#)

- In South Tyneside 11,284 (+30)
- In England 3,814,424 (+ 13,702)
- In the UK 4,362,150 (+16,362)

South Tyneside and Sunderland NHS Foundation Trust admissions – reported [here](#)

As of 30th March 2021 (compared to 23rd March)

- Occupied by confirmed COVID-19 patients
 - Total beds: 30 (-5)
 - Adult General and Acute beds: 22 (-4)
 - Mechanical Ventilation beds - occupied by confirmed COVID-19 patients: 4 (0)
- Total beds occupied: 812 (-54) (as of 10th Mar compared to 4th Feb)

Hospital deaths - reported [here](#)

- In South Tyneside and Sunderland Trust hospitals 918 covid-related deaths (+1)

Deaths within 28 days of positive test – reported [here](#)

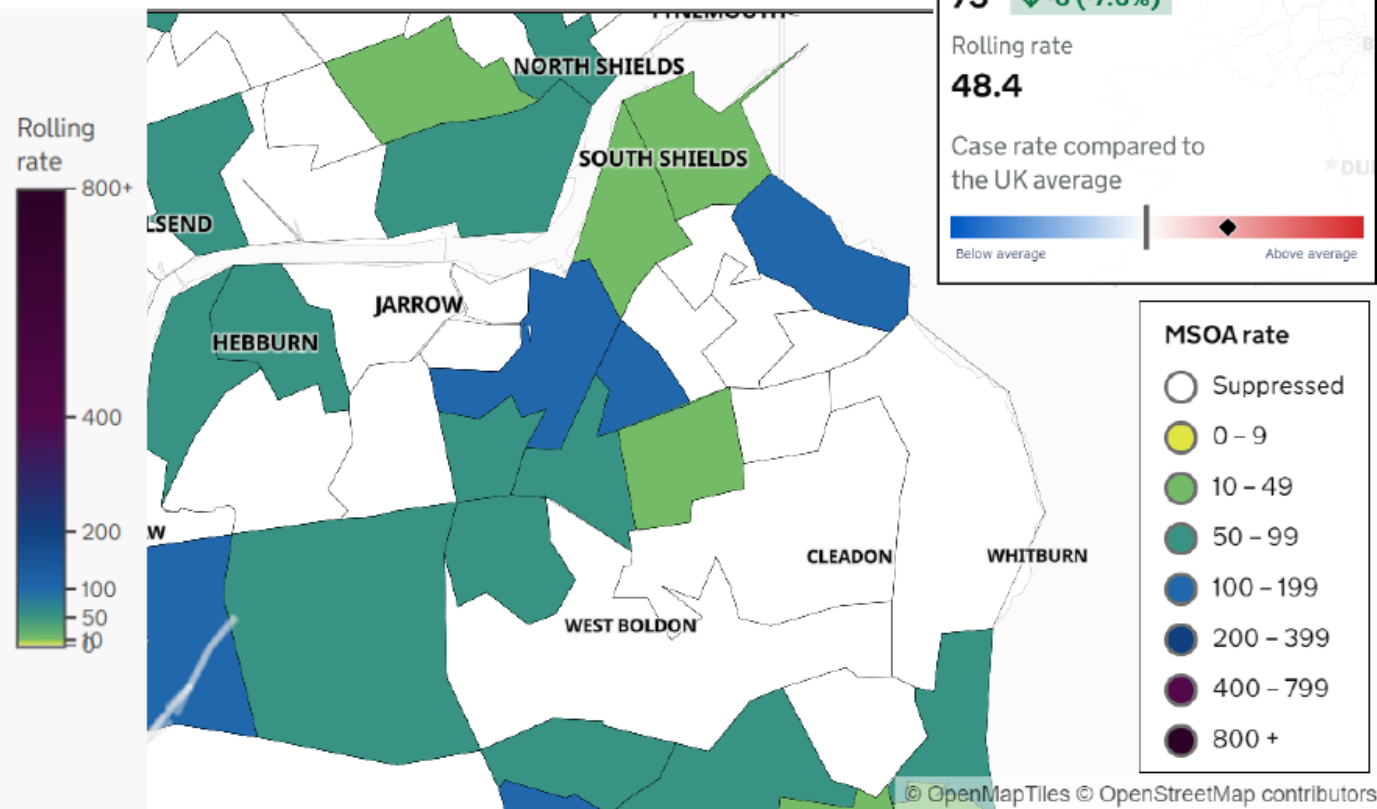
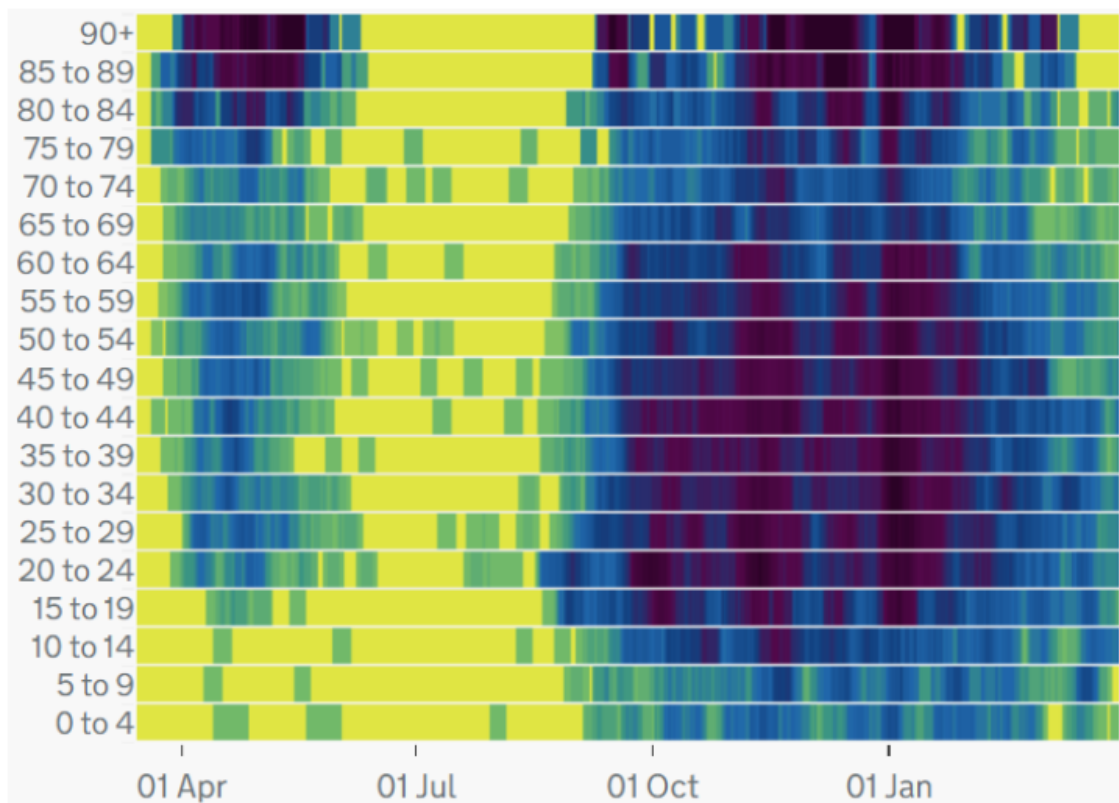
- In South Tyneside 421 (0)
- In England 111,611 (+122)
- In the UK 126,862 (+149)

People vaccinated – reported [here](#)

- First dose: 31,581,623 (+ 676,085)
- Second dose: 5,432,126 (+ 1,323,590)

Data available via: <https://coronavirus.data.gov.uk/>

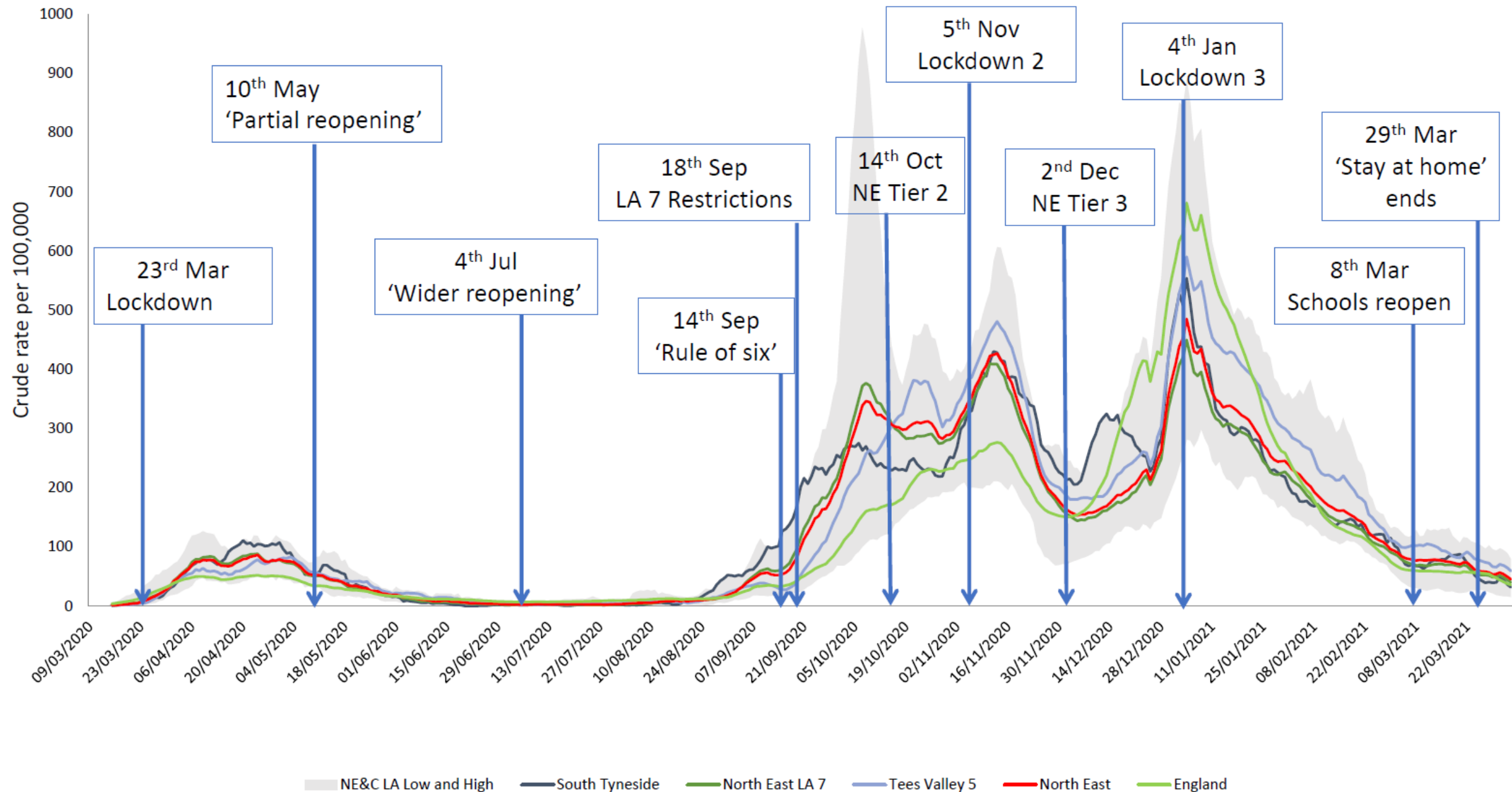
7-days to 31st March rolling rate of new cases by specimen date by age and middle super output areas (MSOA are similar sizes to wards)



<https://coronavirus.data.gov.uk/details/cases?areaType=ltla&areaName=South%20Tyne%20side>

<https://coronavirus-staging.data.gov.uk/details/interactive-map>

Rolling latest 7 day total cases crude rate per 100,000 population by North East and Cumbria local authorities, up to 3rd April 2021



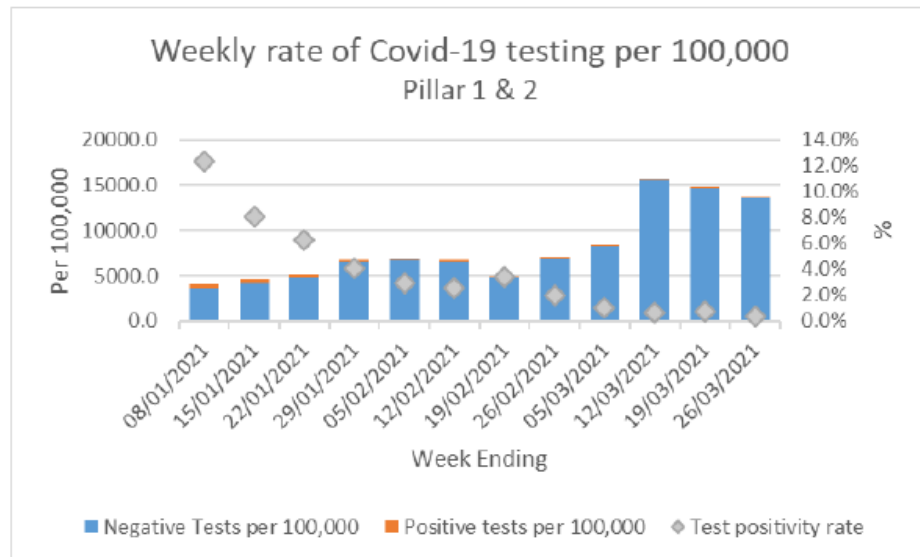
Weekly testing update - All Test Types

Testing by Setting 20 Mar - 26 Mar

	Tests	% Tests	Positive	Negative	Void	% tests that were invalid	% valid tests that were positive
Site Test	4,358	20.9%	48	4,220	90	2%	1%
Care Home Test	3,214	15.4%	3	3,139	72	2%	0%
School Test	11,194	53.7%	11	11,168	15	0%	0%
Home Test	590	2.8%	16	563	11	2%	3%
Unknown Setting	1,479	7.1%	19	1,460	0	0%	1%
Total tests	20,835	100.0%	97	20,550	188	1%	0%

Top 5 sites 20 Mar - 26 Mar

Site	Tests	Positive	Negative	Void	% tests that were invalid	% valid tests that were positive
Chuter Ede (South Tyneside)	297	17	264	16	5.4%	5.7%
Temple Park Leisure Centre (South Tyneside)	281	7	232	42	14.9%	2.5%
Jarrow Library (South Tyneside)	217	7	197	13	6.0%	3.2%
South Shields Town Hall	68	0	68	0	0.0%	0.0%
The Quadrant (North Tyneside)	28	2	26	0	0.0%	7.1%



Site utilisation 1st March – 7th March

Tech Type		Mon 1 Mar	Tue 2 Mar	Wed 3 Mar	Thu 4 Mar	Fri 5 Mar	Sat 6 Mar	Sun 7 Mar	Grand Total
PCR	Leisure Centre Car Park		21.00%	17.80%	15.00%	10.60%			16.30%
PCR	LTS - South Tyneside Jarrow Library	14.60%	4.90%	15.60%	17.70%	8.30%	17.70%	11.50%	11.80%
Unknown	LTS - South Tyneside Jarrow Library						2.10%	5.20%	3.60%
PCR	LTS - Tyneside Galsworthy Road	18.10%	11.10%	6.90%	8.30%	8.30%	22.20%	19.40%	13.70%

Positive tests by LA – 19 Mar to 25 Mar 2021

Includes samples up to		25-Mar	12-Mar and 18-Mar			19-Mar and 25-Mar			7 day rate per 100,000 for 7 days prior						
	Total tests to date (P1&P2)	Rate per 100,000	Actual increase prior 7 days	Increase previous 7 days per 100,000	% gain in previous 7 days	Actual increase latest 7 days	Increase latest 7 days per 100,000	% gain in latest 7 days	19/03/2021	20/03/2021	21/03/2021	22/03/2021	23/03/2021	24/03/2021	25/03/2021
Cumbria	27921	5584.1	124	24.8	0.4%	139	27.8	0.5%	● 22.8	● 22.0	● 22.6	● 23.4	● 26.8	● 26.6	● 27.8
County Durham	37363	7048.4	358	67.5	1.0%	315	59.4	0.8%	● 65.3	● 64.0	● 69.2	● 71.9	● 65.6	● 64.9	● 59.4
Darlington	7337	6869.7	127	118.9	1.7%	82	76.8	1.1%	● 112.4	● 106.7	● 116.1	● 115.2	● 101.1	● 83.3	● 76.8
Gateshead	13561	6711.5	99	49.0	0.7%	88	43.6	0.6%	● 47.5	● 50.0	● 56.4	● 58.4	● 48.5	● 42.6	● 43.6
Hartlepool	8706	9295.0	81	86.5	0.9%	82	87.5	0.9%	● 81.1	● 83.3	● 91.8	● 104.6	● 99.3	● 94.0	● 87.5
Middlesbrough	12252	8690.6	111	78.7	0.9%	69	48.9	0.6%	● 70.9	● 65.3	● 61.7	● 61.7	● 58.9	● 53.2	● 48.9
Newcastle upon Tyne	23063	7616.1	203	67.0	0.9%	126	41.6	0.5%	● 65.4	● 57.5	● 57.8	● 57.1	● 51.2	● 45.9	● 41.6
North Tyneside	12213	5874.1	145	69.7	1.2%	88	42.3	0.7%	● 65.4	● 63.0	● 64.9	● 61.6	● 54.8	● 45.7	● 42.3
Northumberland	17163	5322.9	217	67.3	1.3%	150	46.5	0.9%	● 71.3	● 71.6	● 74.7	● 69.5	● 57.1	● 49.0	● 46.5
Redcar and Cleveland	9189	6700.0	73	53.2	0.8%	61	44.5	0.7%	● 56.9	● 56.9	● 63.4	● 61.2	● 55.4	● 45.9	● 44.5
South Tyneside	11208	7423.7	129	85.4	1.2%	65	43.1	0.6%	● 86.1	● 87.4	● 81.5	● 72.2	● 64.9	● 51.7	● 43.1
Stockton-on-Tees	15513	7860.7	175	88.7	1.1%	192	97.3	1.2%	● 90.7	● 93.7	● 101.9	● 112.5	● 105.9	● 102.4	● 97.3
Sunderland	21761	7836.0	238	85.7	1.1%	177	63.7	0.8%	● 80.7	● 78.1	● 80.7	● 75.3	● 74.2	● 66.6	● 63.7
North East	189329	7091.1	1956	73.3	1.0%	1495	56.0	0.8%	● 71.6	● 70.1	● 73.6	● 73.3	● 66.4	● 60.0	● 56.0
England	3786193	6726.6	31967	56.8	0.8%	31047	55.2	0.82%	● 55.9	● 55.7	● 57.6	● 57.1	● 56.0	● 55.9	● 55.2

This table has been reset to match national methods. The Grey box is the level included in the National daily Situational Awareness report
 Test results are updated every day and so rates are liable to change.
 RAG rating Red>=50, Amber>=25, Green<25

Key issues / developments

From 12 April – roadmap steps going ahead as planned:

- Rule of 6 or two households outdoors
- Household only indoors
- All retail can reopen plus personal care, libraries and community centres
- Most outdoor attractions
- Indoor leisure and gyms for individual use only
- Self-contained accommodation for domestic overnight stays (household only)
- All children's activities
- Outdoor hospitality – pubs & restaurants for food/drinks outdoor only
- Indoor parent and child groups (max 15)
- No international holidays
- Funerals (max 30), weddings/wakes/receptions (max 15)

Asymptomatic testing developments

- From today (9 April), NHS Test and Trace will move to a universal asymptomatic testing offer for the Lateral Flow Devices across the physical collection channels (workplace, community collect, pharmacy) and direct to home service: <https://www.gov.uk/find-covid-19-lateral-flow-test-site>
- South Tyneside Council provides free twice weekly tests at South Shields Town Hall and Hawthorne House Jarrow – contact covidtesting@southtyneside.gov.uk for details
- Home kits can be collected from Chuter Ede or Jarrow Library testing sites from 2:30pm-8pm, 7 days a week (2 per household per day)
- Home kits can be delivered to homes via <https://www.gov.uk/order-coronavirus-rapid-lateral-flow-tests> (1 box per household per day)
- Businesses with 10 employees can still register for home testing kits for their staff until 12 April via <https://www.gov.uk/get-workplace-coronavirus-tests>
- All positive lateral flow tests now require a confirmatory PCR test at a COVID testing site. If confirmatory test is taken within 48 hours and is negative, people can end self-isolation.

Thank you

Any questions?

General queries: covid@southtyneside.gov.uk

Testing queries: covidtesting@southtyneside.gov.uk