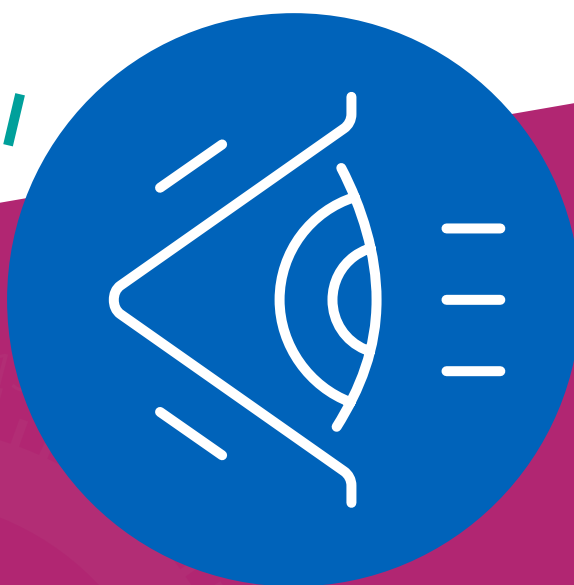


Our vision

for a new Eye Hospital
in Sunderland

March 2021



SUPPORT OUR
VISION
stsCharityAppeal

see page 36

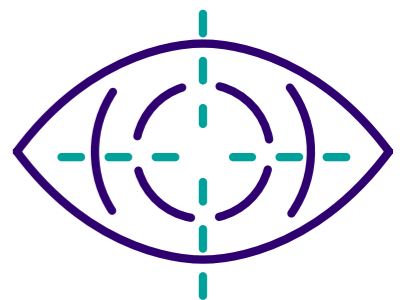


Sunderland Eye Infirmary is widely recognised as a centre of excellence in ophthalmology (eye) services.

It has an outstanding reputation for its high standards of clinical care and is one of very few standalone specialist eye hospitals in the whole country. People come from all over the region to access specialist eye treatment in Sunderland.

This document sets out our plans to build a brand new Eye Hospital in Sunderland. It explains why we need to do this and how you can get involved.

We have included a glossary of terms (see pages 38-43) to help explain any medical/technical words you may not understand.



*Please note - some of the photos used in this document were taken prior to COVID-19.

A proud history

Sunderland Eye Infirmary is an important part of the City's history. The hospital was founded almost two hundred years ago in 1836. It was originally located in the East End before moving to Crowtree Terrace and then onto Stockton Road in 1893. The current building on Queen Alexandra Road was built during the Second World War and before the creation of the NHS.

Today, the hospital serves a much wider population. Patients attend not only from Sunderland and the immediate surrounding areas of South Tyneside and Durham, but from across the whole of North East, North Cumbria and beyond.

Sunderland Eye Infirmary being built on Queen Alexandra Road, 1939



Locations of Sunderland Eye Infirmary through time



Rationale for change

Building a brand new Eye Hospital in Sunderland has been part of our strategic plans for a long time. The current building is now over 75 years old and is at the end of its natural lifespan. Despite the outstanding care and treatment taking place inside, we know that the current building is no longer fit for purpose and does not provide the best experience for patients or staff.

We need to invest for the long-term in order to bring the hospital environment up to modern day NHS standards. Working with Sunderland City Council, we now have the opportunity to build a state-of-the-art facility to reflect the world class NHS care taking place inside.

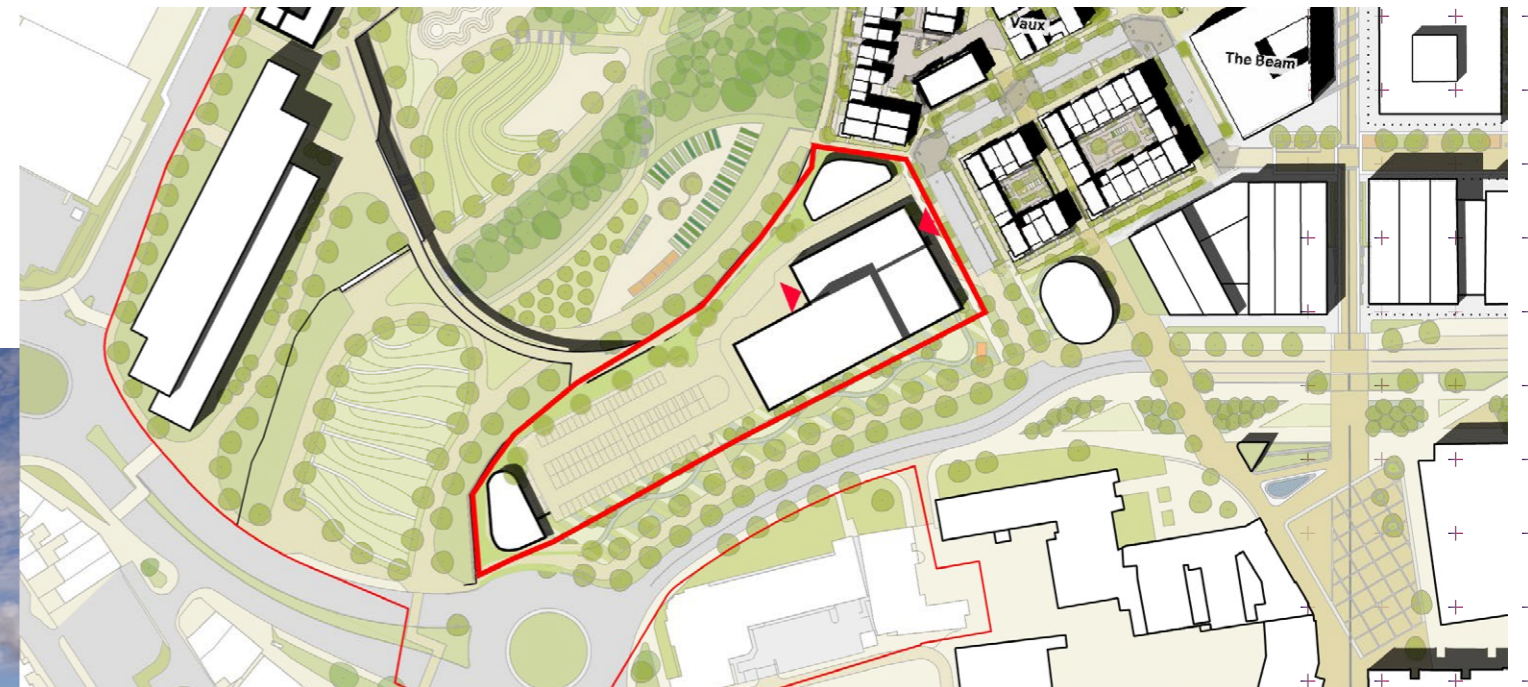
Keel Square Approach, artist impression



Our plans for a new Eye Hospital

The proposed new Eye Hospital will be located in the heart of the City centre. It forms a key part of Sunderland City Council's Riverside Sunderland Masterplan. It would be situated at the western most point of the old Vaux Brewery site as shown below.

The proposed site for a new Eye Hospital in Sunderland



**Riverside
Sunderland**

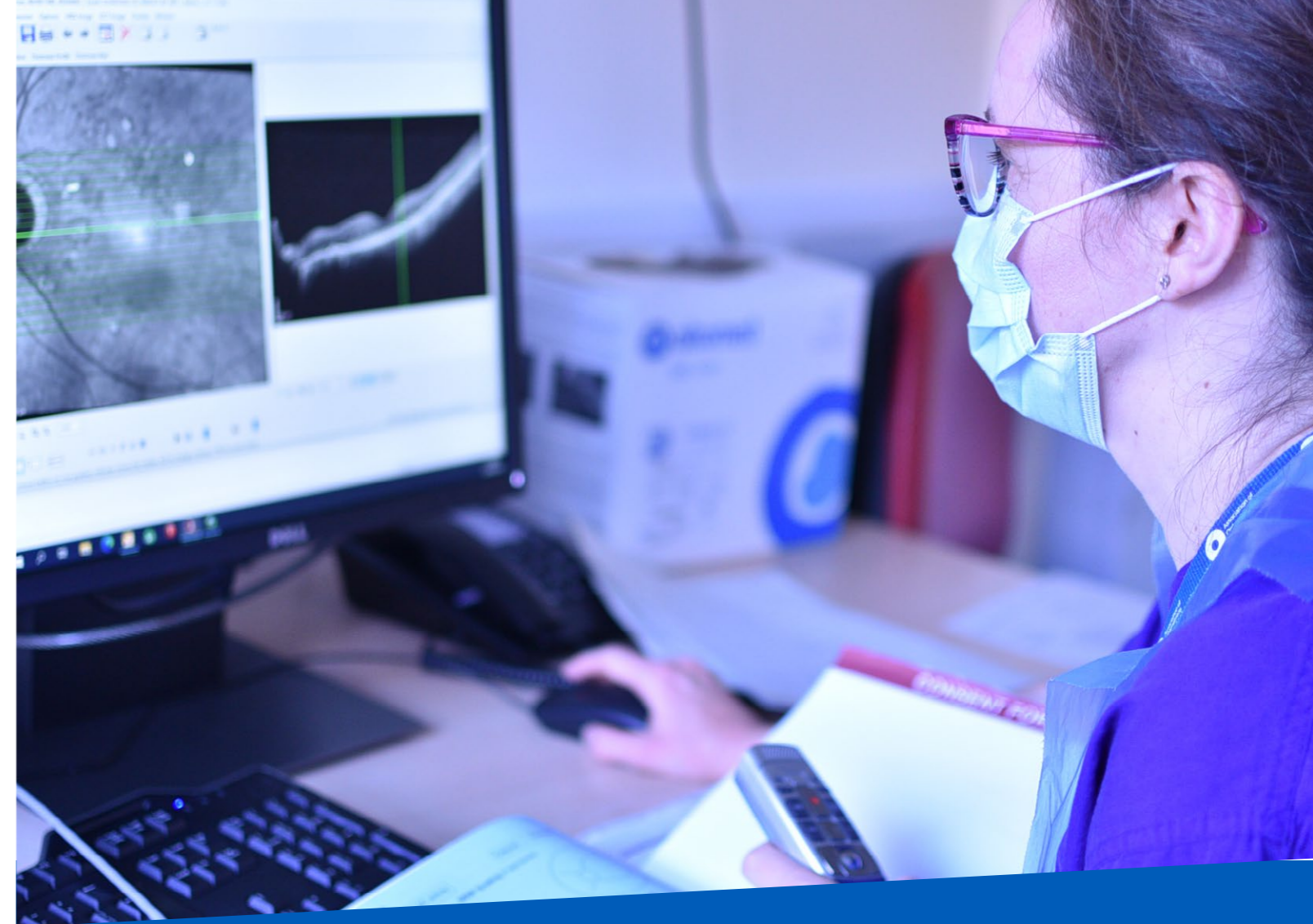
**Sunderland
City Council**

Clinical services

There will be **no change** to the clinical services provided in the new Eye Hospital. They will simply transfer to a new modern, fit-for-purpose building. This includes all of the following specialist ophthalmology (eye) services:

- **Nationally renowned Cataract Treatment Centre providing day-case surgery**
- **24/7 Emergency Eye Department**
- **Outpatient services for a range of sub-specialties including:**
 - Glaucoma
 - Retinal care
 - Paediatrics (children's) clinics
 - Optometry and orthoptic management
 - Corneal, neuro-ophthalmology and eye lid conditions
- **Medical photography/imaging department**
- **Theatre suite for inpatient and day case surgery**
- **Inpatient ward**

There will be no change to the clinical services provided in the new Eye Hospital. They will simply transfer to a new modern, fit-for-purpose building.



In addition, our plans for a new Eye Hospital also include:

- **a new Ambulatory Care area for patients who require short periods of clinical care without being fully admitted to a ward**
- **a new Day of Surgery Admission Unit (DOSU) with individual patient recovery rooms**
- **dedicated separate paediatric areas with appropriate environments for children**

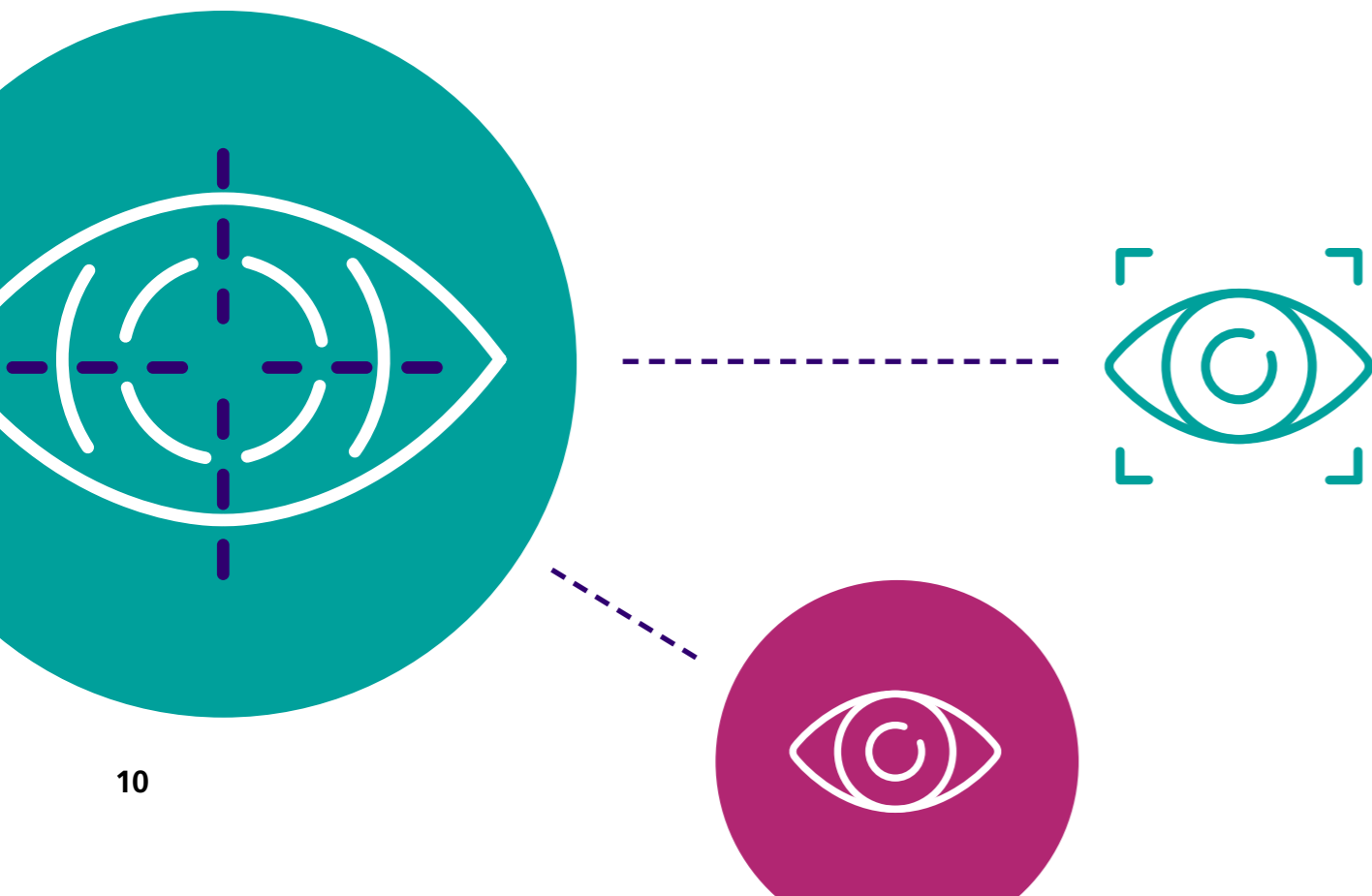
The new Eye Hospital is also being designed to allow for future expansion should this be required.

Our satellite hubs/community clinics

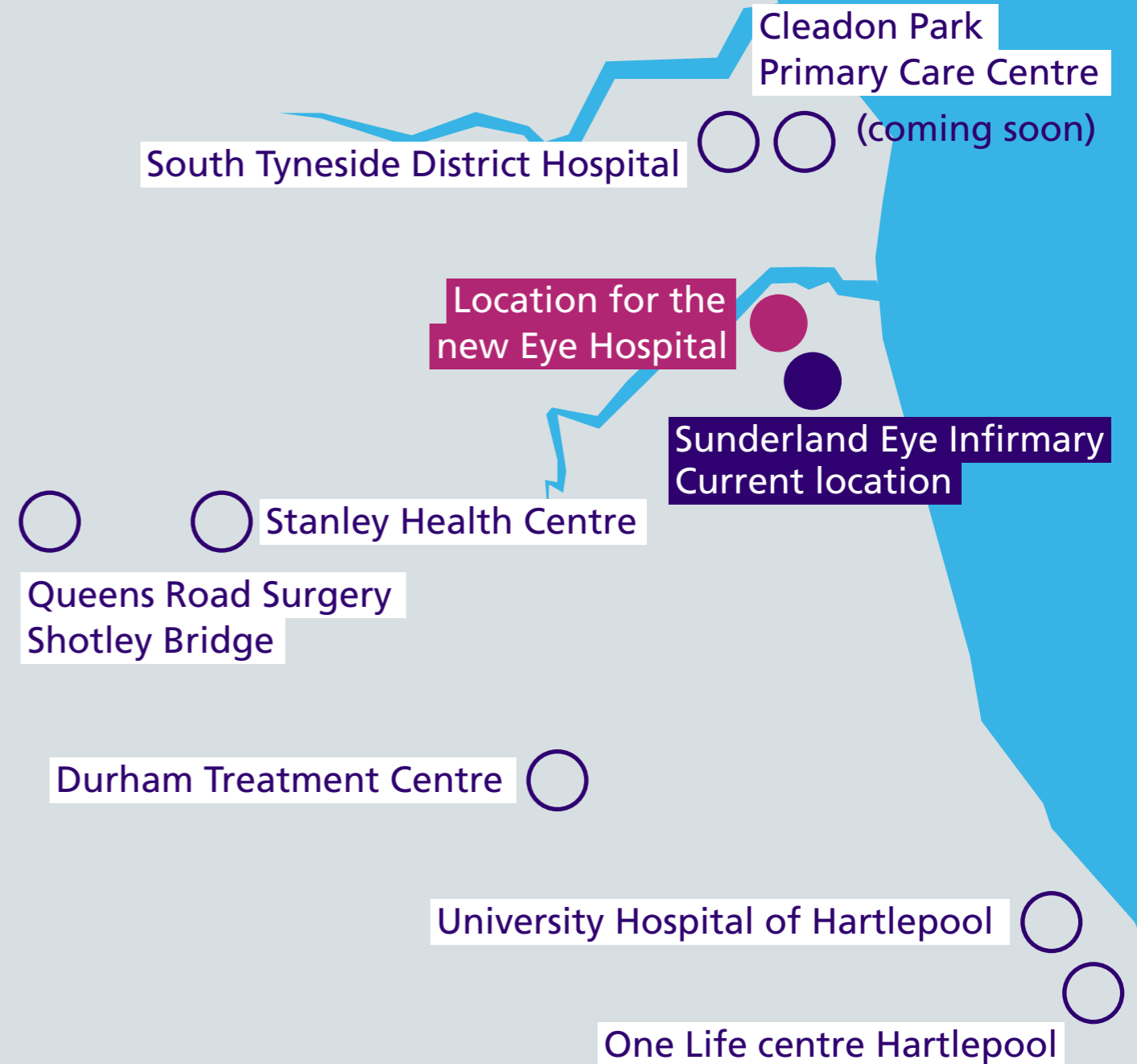
We also run specialist eye services from a range of neighbouring hospitals and community facilities. Services will continue from:

- South Tyneside District Hospital
- Durham Treatment Centre
- University Hospital of Hartlepool
- One life Centre, Hartlepool
- Queens Road Surgery, Shotley Bridge, County Durham
- Stanley Health Centre

We also plan to open a further satellite hub at Cleadon Park Primary Care Centre in South Tyneside.



Our satellite hubs



Proposed design and layout

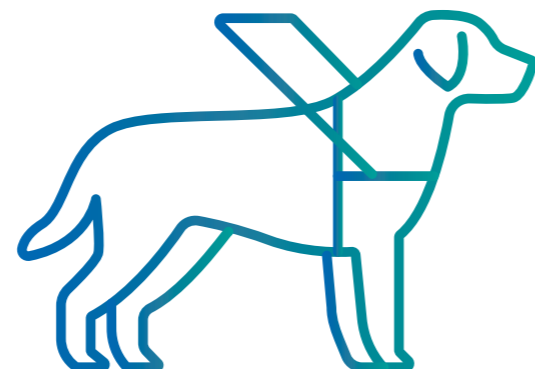
During 2020, staff have worked with architects to develop some early ideas and designs for the proposed new Eye Hospital. Patient representatives from the Royal National Institute of Blind People (RNIB) have also helped. This early design work has focused on the patient experience. We want to improve:

- the patient journey and flow throughout the hospital
- privacy and dignity for patients, carers and families
- lighting and sound acoustics within the new building
- wayfinding, signage and patient waiting areas

A summary of the proposed layout is included below.

Ground floor

The ground floor will be open, airy and welcoming. A feature staircase will provide access to the second floor with lifts to all floors. There will be a large welcome desk and two main entrances; one from the car park and the other making access easy for those walking or arriving by public transport. The public spaces will include a Royal Voluntary Service (RVS) shop and a pharmacy. An Eye Clinic Liaison Office will also be located on the ground floor. This will offer practical help and support for those with sight impairment. For people attending with a guide dog, there will be a dedicated outdoor area for our furry canine friends.



Ground floor, artist impression

Clinical services located on the ground floor will include the 24/7 accessible Emergency Eye Department (with its own separate entrance) and the Retinal Unit. This is where patients with macular or retinal disease will attend for regular check-ups and treatment. There will be an imaging hub so patients can have scans without going to another floor.

24/7



First floor

All main outpatient clinics will be located on the first floor. There will be a reception desk at the top of the stairs and a large waiting area. There will be another imaging hub for patients who need to have a scan. There will also be two treatment rooms for minor procedures that do not require an operating theatre. Clinics for children will have a separate waiting area with enough space for buggy/pram parking. There will also be a public and staff restaurant which features an external terrace. Plans include a faith room and a dedicated area for breast feeding.

Second floor

The main inpatient ward and operating theatres will be located on the second floor. Patients who need to stay in hospital will have their own ensuite bedroom with views across the Galley's Gill park area, and towards the River Wear. A new Ambulatory Care area will be located alongside the ward. This is for patients who need short periods of clinical care and who go home the same day.

There will be a new Day of Surgery Admissions (DOSA) Unit with individual rooms. This is where patients who need operations will arrive, have their surgery and then recover before being discharged home. Children who need surgery will have a separate waiting and recovery area.

Third floor

The third floor will be home to our nationally renowned Regional Cataract Treatment Centre (CTC). Patients who need cataract treatment will have this all delivered on the same floor. This includes all outpatient clinics and surgery.

Education and training facilities will also be located on the third floor. There will also be admin / office areas for staff.

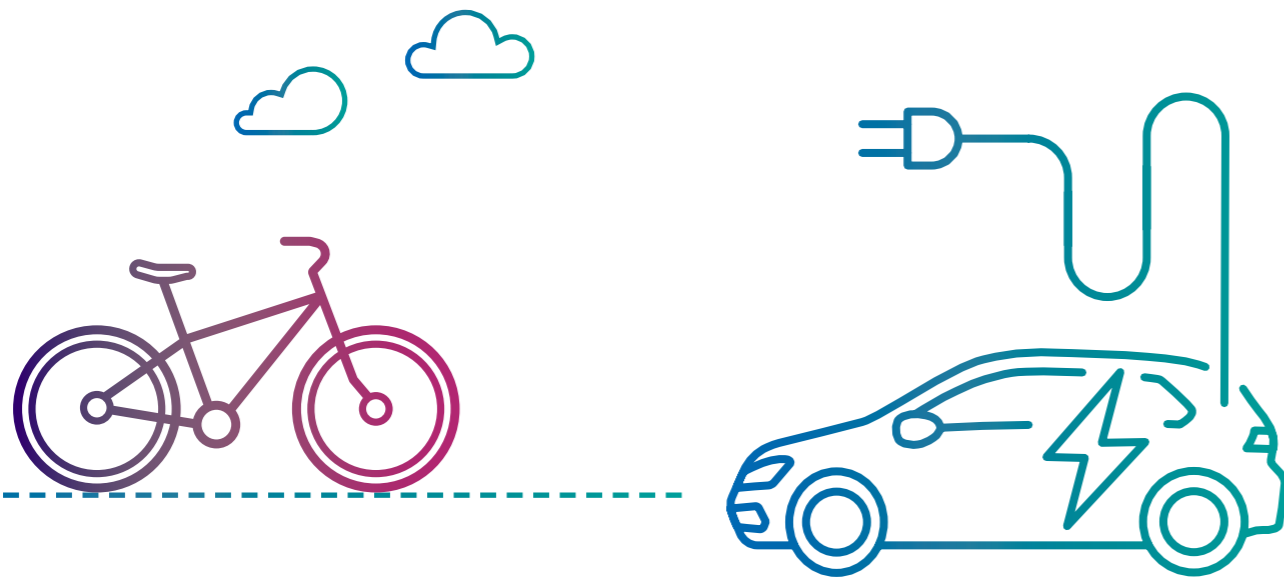


Our commitment to a sustainable future

South Tyneside and Sunderland NHS Foundation Trust is committed to becoming a sustainable healthcare provider. We are already a key partner in the City's ambition to become carbon neutral by 2040.

Our plans for a new Eye Hospital will have minimal environmental impact. This includes during the construction phase and once the new Eye Hospital opens. There will also be a number of electric car charging points as well as cycle storage for staff that commute by bicycle and for use by visitors.

As one of the most digitally advanced organisations in the NHS, we will also maximise the use of technology. The new Eye Hospital is being designed to be paper-free at the point of care. This will include the introduction of a new fully integrated electronic patient record which is pivotal in the safe and effective delivery of modern day NHS care.



Research and innovation

Embracing research and innovation is a core part of what we do. Sunderland Eye Infirmary has an outstanding reputation for research. Our clinical teams have won many awards. This will continue at the new Eye Hospital. We will keep striving to improve services and eye treatments through high quality research and innovation.

The new City centre location means we will be even closer to Sunderland University. This will provide even more opportunities to work with patients, the public and our partners. We want to grow our status as a centre of excellence in ophthalmology research.



What have patients told us so far?

Patients at Sunderland Eye Infirmary always rate their experience very highly. Feedback about care and treatment is overwhelmingly positive. Most patients are 'extremely likely' or 'likely' to recommend services to their friends and family.

Despite this, a recurring theme of feedback over recent years has been about the current old building. Patients recognise the need for refurbishment. There are often negative comments about the temperature being too high. Patients also complain about the lack of toilets and shower facilities on the ward.

To help inform plans for a new Eye Hospital, over 2,000 patients gave us their feedback*. Patients who have used services over the past two years were picked at random to make sure we had a representative sample. This included patients from across the North East and North Cumbria. Many people commented about the need for investment to improve the building.

A number of key themes were identified by patients about how the building could be improved. This included the need for:

- **Larger and clearer signage**
- **Better wayfinding / directions around the building**
- **Better use of colour, light and sound to help people with visual impairments**
- **Improved waiting room areas with more seating to accommodate carers**
- **Better use of technology to allow self 'check-in' on arrival**

*SEI Patient Survey 2020

2,000

patients gave us their feedback

Care

96%

of patients rated their care as 'outstanding' or 'very good'.

Facilities

this compared to only

77%

of patients who rated the facilities as 'outstanding' or 'very good'.

"I have been a patient on several occasions and would sing the praises of staff and care. Any change would need real financial investment to this elderly but wonderful hospital."

"I think the overall experience is outstanding, any changes would be too expensive/difficult to implement."

Learning from COVID-19

As plans for a new Eye Hospital progress, we want to make sure we capture learning from COVID-19 and how we have used technology.

Many appointments are now successfully taking place by phone or video. Some eye conditions still need face to face appointments so that regular images can be taken of the eye. Wherever possible, we want to reduce the need for patients to travel to hospital if they don't need to. Patients welcome this as a more convenient way to access care.

47% of patients have told us they are happy for future outpatient appointments to take place virtually.

A new 24/7 emergency phonenumber has proved a huge success. This allows patients to speak to a specialist over the phone if they have an urgent eye problem. The phonenumber was introduced as a result of COVID-19. It has greatly improved the service in our Emergency Eye Department and means patients get quicker access to emergency care if they need it.

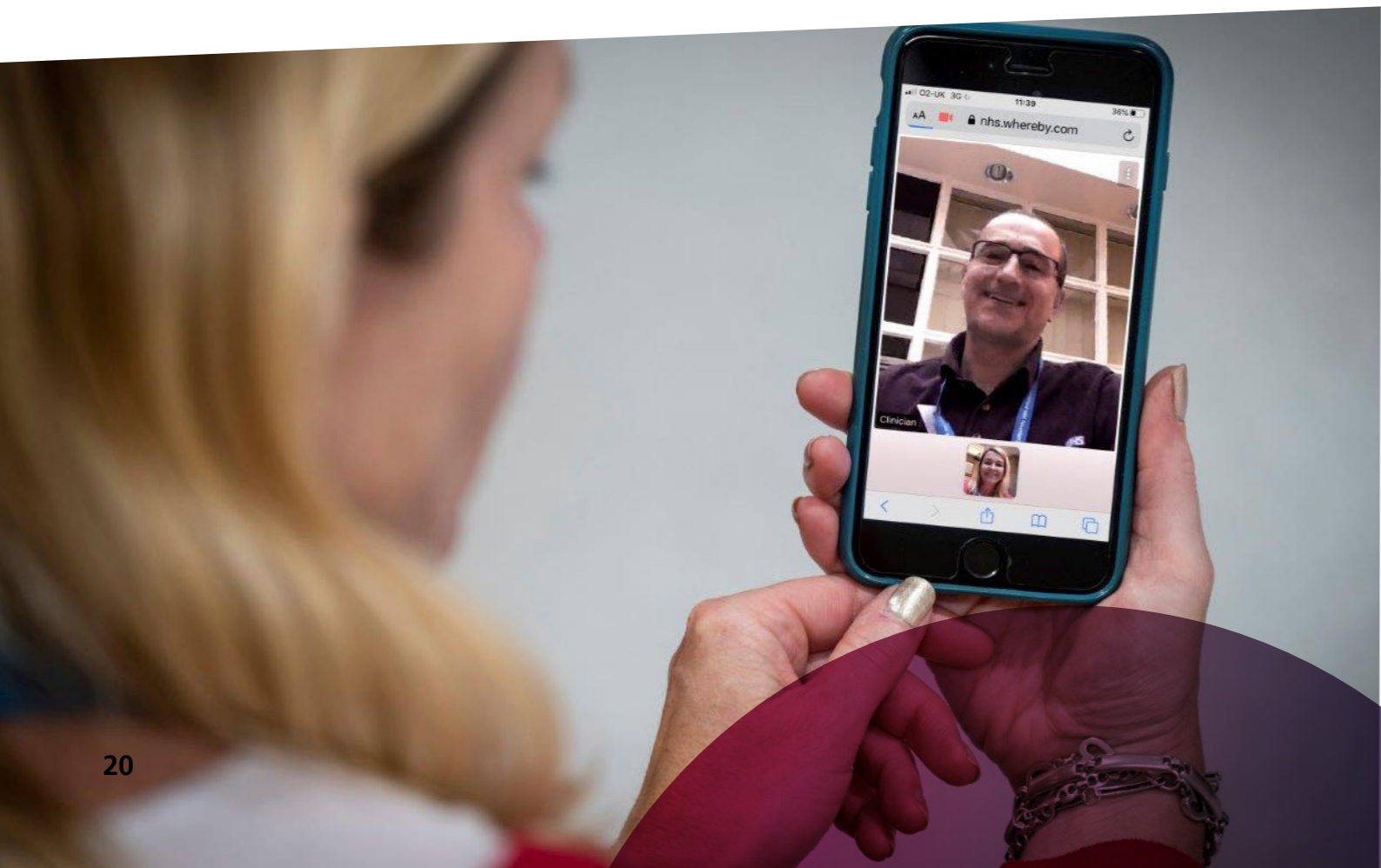
What our patients say

92% of patients had a positive experience when using a new 24/7 emergency phonenumber at Sunderland Eye Infirmary.

94% of patients thought the new 24/7 emergency phonenumber should continue in future.

“I just walked up as I live nearby. Using the phonenumber was spot on. Everything was wonderful. It gave me peace of mind. Nothing but praise.”

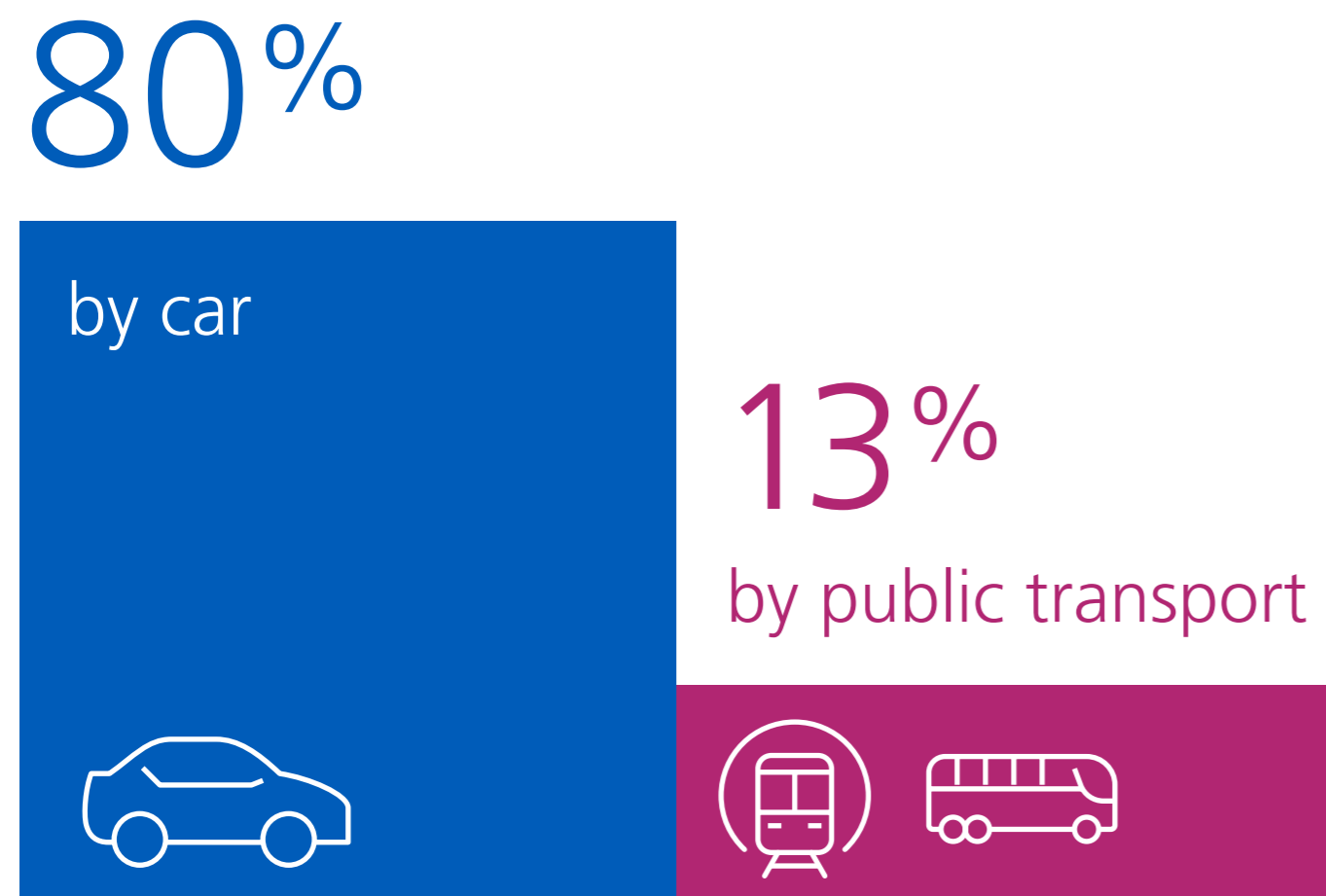
“We rang up and they answered straight away. I wasn't left waiting. Everything was first class.”



Travel and access

Access to the proposed new Eye Hospital will be important. From our recent survey, we know that 80% of patients who attend Sunderland Eye Infirmary currently arrive by car and 13% rely on public transport. Regardless of how people get there, the new City centre location offers much improved access and excellent transport links. For those who do attend using public transport, local networks are within close walking distance for bus, train and metro facilities.

How people currently arrive at Sunderland Eye Infirmary*



*SEI Patient Survey 2020

Car parking

There will be a dedicated on-site car park at the new Eye Hospital with 90 spaces. This will include accessible bays and electric car charging points. In addition, a new car parking facility providing 650 spaces is planned nearby at Farrington Row. 100 of these spaces will be dedicated for staff at the new Eye Hospital. For those who are travelling to the new Eye Hospital by car, there is also the existing multi-storey car park at St Mary's. These will also include electric car charging points and agreed rates for permit holder parking.

Pedestrian access

Naturally blessed with views over the River Wear, the new Eye Hospital will be connected to the Riverside Sunderland development with new walkways, parks and attractive landscaping to help people enjoy the outdoor space and peace and tranquillity of the riverside. By 2023, a new pedestrian crossing will better provide better links to the north side of the River Wear.

Mobility hub

In line with the City's ambition to become carbon neutral, a 'mobility hub' is also being planned close to St Mary's car park. This will offer access to a car share club, e-bikes and e-scooters for people accessing the Riverside Sunderland development, including the new Eye Hospital.

Transport links to the new Eye Hospital

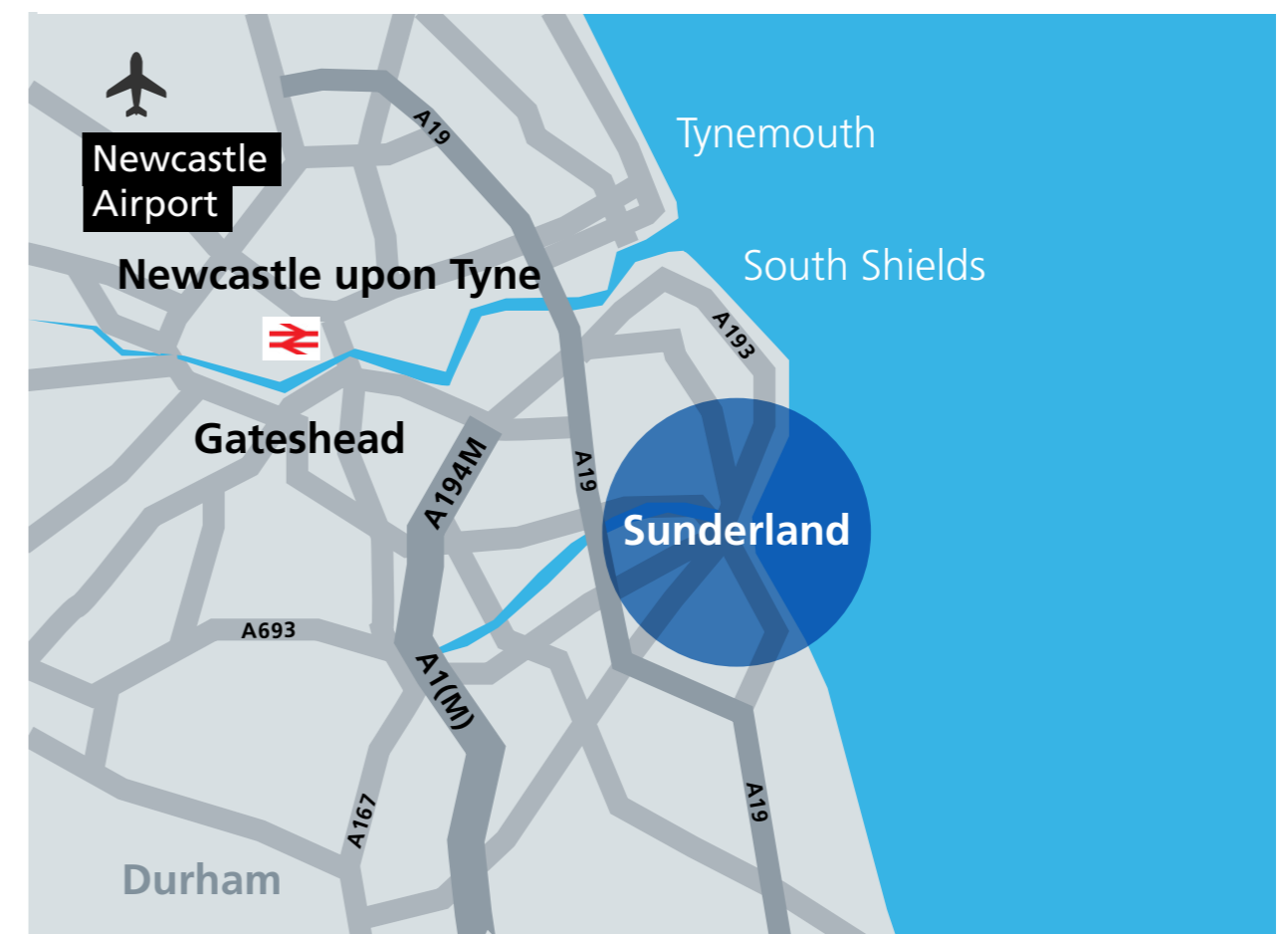


Key to map

- Location for the New Eye Hospital
- ≡ Railway station
- M Metro station
- 🚲 Secure cycle parking and lockers
- 5 minute walk to city centre
- B Bus stops

- St Mary's Boulevard (EB) 2 minute walk
- St Mary's Boulevard (WB) 1 minute walk
- Fawcett Street (NB) 8 minute walk
- Vine Place/Holmeside 8 minute walk
- John Street (SB) 10 minute walk

Sunderland has excellent transport links to the rest of the North East and beyond and is served by major road and rail networks.



What do staff think?

Staff at Sunderland Eye Infirmary are very excited about the prospect of a new Eye Hospital.

“The new build represents a great opportunity for our research team.

“The planned facilities offer the opportunity to accommodate our increasing portfolio of clinical trials and infrastructure for developing research careers within ophthalmology for all staff.

“Hopefully this will continue our growing reputation as an internationally acclaimed Ophthalmic Research Centre.”

Steve Dodds, Research Manager

“Since starting my career here in 1983, I have many happy memories of working at the Eye Infirmary but now is the right time for change. There will be the same high quality care and friendly faces but in a new building fit for the future to serve our local community.”

Diane Hurcombe, Department Manager Cataract Treatment Centre



“I have been privileged to be so heavily involved in such an exciting project from the start.

“I think it is an excellent opportunity to create something that will carry forward the exceptional services and reputation for the future generations.

“I have been overwhelmed by the staff enthusiasm, engagement and collaboration between the teams, the architect and project lead. It is impressive to see the new ideas for patient flow that are developing and improving as we go through each stage. I look forward to the next step and hearing feedback from the public.”

Caroline Bell, Ophthalmology Directorate Manager

“The purpose built new children’s eye section within the new build plans is visually and audibly separated from the adult service. This gives us an opportunity to deliver children’s eye care that is safer, more effective, and provides a better patient experience and thus improves health care outcomes for all in our region.”

Lawrence Gnanaraj, Paediatric Ophthalmologist, Sunderland Eye Infirmary

"I'm pleased that after 31 years of working at Sunderland Eye Infirmary I have had the opportunity to be involved in the planning of the new theatres. The new environment, facilities for staff and patients will be fantastic.

"The Day of Surgery Admissions Unit will reduce the need for overnight stays as there will be excellent facilities for adults and children. Patients' privacy will be improved as they will have their own private en-suite room for the length of their stay with the benefit of a fast and efficient service and timely patient pathway."

Kath Stoddart, Theatre Manager

"Sunderland Eye Infirmary has provided superb care for patients for many years and I have had the great privilege to have worked there for just a few of those. The clinical team have always given their best but the constraints of an old building that isn't fit for purpose have restricted how they can move with the times. The proposed new building will offer so much more in terms of the patient experience, linked sub-speciality areas, clean and smart new environments but, above all, the same exceptional care in a more easily accessible place. I can't wait to see this come to fruition."

Tina Morrell, Sunderland Eye Infirmary Programme Manager

"Moving into a purpose built Ophthalmic Hospital will make a massive difference to how we provide ophthalmic services to the local community of South Tyneside, Sunderland and the North East Region.

"The culture of our small and friendly hospital will be retained when we move into the new build, taking with us our priorities of making patients feel safe and comforted whilst in our care.

"The new environment will greatly enhance and improve the efficiency of the already excellent care that we provide for our patients. It will allow us to streamline pathways of care so that each patient benefits from personalised ophthalmic management."

Denise Johnson, Matron Ophthalmology, Sunderland Eye Infirmary



How is the new Eye Hospital being funded?

Building a new, fit-for-purpose Eye Hospital in Sunderland has been part of our ambitions for a long time. We want to provide world class healthcare facilities. This is now possible thanks to joint working with Sunderland City Council.

A development agreement is in place with the Council in order to secure the £36m we need to deliver the new Eye Hospital. We will repay this in full and it has no impact on other Council resources. This means we can get the best value for money and continue to invest in the regeneration of the City.

If we continue to run services from the current site, this will be much more expensive in the long-term. This would not be an efficient use of taxpayer's money.

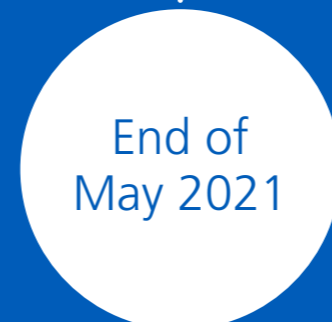
We are also working with the Council to discuss what will happen to the existing hospital site, once the new Eye Hospital opens.



Timescale and next steps



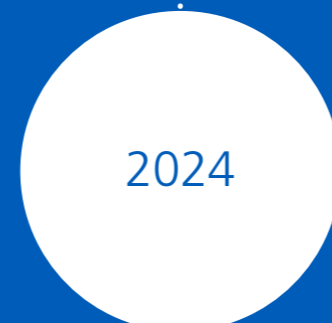
Between March and May 2021, we want to gather as much feedback about our plans as possible.



We plan to submit a formal planning application at the end of May 2021.



Building work is expected to begin in 2022 (subject to planning approval).



We are planning for the new Eye Hospital to open in 2024.

How to get involved

We want to hear from patients, families and carers and the general public to help us shape and refine our plans for the new Eye Hospital. Your views are incredibly important. There are a number of ways to get involved:

Complete our online survey and tell us:

- **Is there anything you particularly welcome about our plans for the new Eye Hospital?**
- **Is there anything that concerns you about our plans for the new Eye Hospital?**
- **What would make the new Eye Hospital accessible for you and your family/friends?**
- **What would make you feel more comfortable as a patient and/or visitor to the new Eye Hospital?**
- **What would improve your overall experience of using the new Eye Hospital?**
- **Any ideas about the new Eye Hospital design that we might have missed?**

Attend an online public engagement event:

Given the current situation with COVID-19, over the next 8 weeks we will hold virtual engagement sessions for members of the public. You will be able to see the designs, give us your feedback and ask any questions about the proposed new Eye Hospital. Dates and times are shown on the next page. You must book using the link below:



<https://www.stsft.nhs.uk/neweyehospital/get-involved/events-calendar>

Virtual engagement sessions

| Date | Time | Event type |
|-------------------|-------------|--------------------------------|
| Friday 19 March | 2pm – 3pm | Online launch event |
| Saturday 27 March | 10am – 11am | Online public engagement event |
| Tuesday 30 March | 1pm – 2pm | Online public engagement event |
| Thursday 15 April | 2pm – 3pm | Online public engagement event |
| Tuesday 20 April | 6pm – 7pm | Online public engagement event |
| Tuesday 27 April | 10am – 11am | Online public engagement event |
| Thursday 29 April | 2pm – 3pm | Online public engagement event |
| Tuesday 4 May | 1pm – 2pm | Online public engagement event |

Request a focus group

We are also holding some dedicated focus groups with patients, families and carers. This is to make sure the proposed new Eye Hospital offers the very best experience for anyone who needs to use it in the future.

If you represent a community or voluntary sector group please get in touch. This will help ensure your service users and volunteers are able to influence plans for the proposed new Eye Hospital. We are particularly interested in talking to:

- **People with a sight impairment and/or sight loss**
- **Younger people and teenagers**
- **Families and carers**
- **Older patients and patient groups**
- **Dementia services**
- **Black, Asian and Minority Ethnic Groups**
- **People with learning disabilities**

We are also keen to hear from people with an interest in the protected characteristics defined by the Equality Act 2010 that includes: age; disability; gender reassignment; race; religion or belief; sex; sexual orientation; marriage and civil partnership; pregnancy and maternity.

Find out more about our plans for a new Eye Hospital in Sunderland:



<https://www.stsft.nhs.uk/neweyehospital>



stsft.sei@nhs.net



0191 404 1284



We want to hear from patients, families and carers and the general public to help us shape and refine our plans for the new Eye Hospital. Your views are incredibly important.



SUPPORT OUR VISION



Alongside our plans for a new Eye Hospital, we are also delighted to launch our Vision charity appeal. This aims to help raise vital funds so that Sunderland stays at the forefront of the very latest eye treatments and cutting edge technologies. Money raised through the Vision appeal will help fund even more state-of-the-art equipment for the new Eye Hospital, over and above what is already being planned.

To support our Vision charity appeal or find out more about how you can fundraise for us

Visit: www.stsft.nhs.uk/our-charity/vision-appeal

How will your donations help?

Just like mobile phones, technology changes very quickly in the world of eye treatment. We have set our sights on a number of key pieces of equipment. This is over and above the kit that we will install as part of the new Eye Hospital.



Visual fields testing machine to test peripheral vision

Cost: Over £30,000 per machine



Flexible 3D eye scanning machines for patients who cannot sit upright

Cost: Over £100,000 per scanner



Hi-tech ceiling microscopes for our new operating theatres

Cost: Over £100,000 per microscope



3D eye scanning machines

Cost: Over £130,000 per scanner



Adjustable examination chairs

Cost: Over £6000 per chair



State-of-the-art equipment (Phaco machines) used for cataract surgery

Cost: Over £35,000 per machine



Advanced camera technology to provide colour images of the interior surface the eye

Cost: £15,000 per camera



Glossary

Adjustable examination chairs

Adjustable, electric couch-bed designed to offer optimal working conditions for carrying out diagnostic examinations and laser treatment.

Advanced camera technology

This is specialist equipment to provide colour images of the interior surface of the eye. The images assist clinical staff to improve diagnosis for patients.

Ambulatory Care

This is a short-stay service that is provided for patients who need specialist same day review and treatment without being fully admitted to a ward. The care can include rapid access to diagnostics, senior specialist review and a management plan for your eye condition.

Carbon neutral

Being 'carbon neutral' means that the hospital will emit the same amount of carbon dioxide into the atmosphere that South Tyneside and Sunderland NHS Foundation Trust will offset by some other means such as energy efficiency measures and energy reduction measures.

Consultation room

A room where a healthcare professional examines and talks to patients.

Cataract Treatment Centre

Cataracts are a common eye condition causing a number of visual disturbances including blurred vision, glare and colour distortion. The Cataract Treatment Centre is one of the busiest cataract units in the country delivering a large quantity of high-quality cataract surgery.

Cataract surgery

Most cataract surgery is performed under local anaesthetic in the form of either numbing drops or an anaesthetic injection. Surgical appointments usually last approximately two hours from admission to discharge although the actual surgery time is considerably less.

Corneal, neuro-ophthalmology and eye lid conditions

Corneal conditions affect the cornea of the eye which is the transparent part of the eye that covers the front portion of the eye.

Neuro-ophthalmology conditions are caused by conditions affecting the nervous system, such as multiple sclerosis. These conditions can involve malfunction of the eyelids and muscles that control eye movement, or they may affect the optic nerve itself, resulting in partial or full vision loss.

Eye lid conditions include any type of inflammation, infection, tumours and structural problems around the eye lid. Most eyelid conditions are not sight-threatening. However, they do cause many uncomfortable symptoms such as pain, burning, and foreign-body sensation.

Consultant

A senior doctor or surgeon with specialist training and expertise in a particular area of medicine such as ophthalmology (eye) care.

Day-case surgery

Day-case surgery does not require an overnight hospital stay. Eye surgery patients attend the hospital for a planned surgical procedure, returning home on the same day.

Day of Surgery Admission Unit (DOSA)

This is where patients who need operations will arrive, have their surgery and then recover in their own room before being discharged home. Children who need surgery will have a separate waiting and recovery area.

24/7 Emergency Eye Department (ED)

This is a specialist eye emergency department (ED) for people who have eye emergencies. The Emergency Eye Department is not a general ED and can only help with eye conditions.

Eye scanning machines (OCT)

The 3D eye scan uses light waves to produce a 3D image showing a digital photograph of the surface of the eye. The machine allows your doctor or clinician to see both the back of your eye and a 3D image to look beneath the surface of the eye and locate a particular eye condition.

Flexible 3D eye scanning machines (OCT Flex)

The 3D eye scan uses light waves to produce a 3D image showing a digital photograph of the surface of the eye. The flexible machine is for patients who cannot sit upright and allows the doctor or clinician to see both the back of your eye and a 3D image to look beneath the surface of the eye and locate a particular eye condition.

Glaucoma

Glaucoma is a common eye condition where the optic nerve, which connects the eye to the brain, becomes damaged.

Glaucoma Unit

The Glaucoma unit investigates and treats glaucoma.

Guide Dog

Guide dogs are assistance dogs trained to lead blind and visually impaired people around obstacles.

Imaging

Ophthalmic (eye) imaging is the use of specialist equipment to create detailed images to support the diagnosis and treatment of a range of eye conditions.

Inpatient

When a person is referred to hospital for an operation or test and they need to stay overnight, it means you're being treated as an inpatient.

Macular disease

A condition relating to the macula of the eye and the degeneration of the macula area. This is part of the retina at the back of the eye.

Nurse assessment unit

A nurse-led area of the hospital where nurses complete initial medical assessments of patients.

Optometry and orthoptic management

Optometry describes how we examine the eyes and looks for defects in vision. Orthoptics is the study, diagnosis and non-surgical treatment of eye differences such as binocular vision and squints. The orthoptist looks at how the eye works with the brain to create vision.

Ophthalmology services

This relates to the diagnosis and treatment of all eye diseases and vision disorders. It includes eye surgery and treatment or injuries to the eye.

Outpatient services

These are hospital services for patients who attend a planned hospital appointment and do not need to stay overnight.

Paediatrics (children's) clinics

Specialist clinics for the diagnosis and treatment of conditions affecting children and young people.

Patient journey

A patient journey represents the entire sequence of events that a patient experiences from the moment they arrive until the moment they leave the Eye Hospital.

Public engagement

This relates to planned activity enabling people to voice their views, needs and wishes and to contribute to plans and proposals about the new Eye Hospital.

Refurbishment

This refers to the renovation and redecoration of something, especially a building.

Retinal care

The retina is the part of the eye that receives light and converts this into signals sent to the brain to interpret. A common condition is retinal detachment – this is when the retina comes away from the supporting tissue of the eye.

Retinal Unit

An area of the hospital which is dedicated to the diagnosis and treatment of retinal diseases.

RNIB

The Royal National Institute of Blind People (RNIB) is a UK charity offering information, support and advice to almost two million people in the UK with sight loss.

Satellite hub

Sunderland Eye Infirmary operates from a range of neighbouring hospitals and community facilities across the North East region. These hospitals and facilities are referred to as ‘satellite hubs’ and provide a range of eye care outpatient clinics.

Sub-specialty

A sub-speciality describes an area of specialist medical care within a specialist area. For example, paediatric or children’s eye care is a *subspecialty* of ophthalmology (eye) care services.

Riverside Sunderland Masterplan

This is the Sunderland City Council’s proposals to transform a 32-hectare Sunderland riverside site in the heart of the city. The Riverside Sunderland Masterplan will create 1,000 homes for a community of 2,500 people, and 1 million square feet of offices and workspace for 8,000 – 10,000 quality jobs. Beautiful parks and public open spaces will create a landscaped setting, with new river crossings for walkers and cyclists.

Visual fields testing machine to test peripheral vision

This is a specialist machine that measures the central and peripheral (side) vision. It is used to diagnose eye problems. The most common visual field test uses a light spot that is repeatedly presented in different areas of your peripheral vision.

Wayfinding

Wayfinding refers to information systems that guide people through a physical environment such as a hospital. It enhances their understanding and experience of the space. These information systems help people develop mental maps of the building and simplify their routes to get to their destination point.

Find out more about our plans for a new Eye Hospital in Sunderland:



<https://www.stsft.nhs.uk/neweyehospital>



stsft.sei@nhs.net



0191 404 1284

If you require this document in another format such as large print, easy-read, braille, audio, or a different language please use the contact details above.